

# Experience-First Networking

Maximize user and IT experiences with secure client-to-cloud automation, insight, and AI-driven actions.



Have you ever heard someone say  
**“The Wi-Fi sucks,”**  
but all your dashboards  
and event logs say the  
network is working  
just fine?

Have you received a  
complaint that  
**“The internet isn’t working,”**  
but there are no records  
of a WAN service issue  
in your area?

Or has the comment  
**“My application is slow”**  
left you scrambling to  
determine if there really  
is a network or security  
problem... or is it just the  
user’s perception?

All too often, there is a disconnect between network performance and user experience, which gets worse as the number of users, devices, and applications grow in a given environment. But **“up”** and **“available”** are not the same as **“good,”** and just passing traffic is no longer an acceptable measurement of a successful IT infrastructure.



# Experience-First Networking.

Juniper knows that experience is the first and most important requirement for networking in the cloud era.

This is why we are focused on putting our users — the network architects, builders, and operators — at the center of all that we do, so that to their users — the salesperson giving a demo over video call, the associate using a point-of-sale scanner in a store, the students watching Netflix in their dorm rooms, and the developer coding the next billion-dollar app — are as happy and productive as possible.

This requires a relentless focus on experience, from when customers first engage with us to how they deploy and manage our solutions on a day-to-day basis (including upgrades, troubleshooting, and feature rollouts).

Maybe a short-handed enterprise IT team has to deploy and troubleshoot a software upgrade in 1,000 retail stores. Or a network security manager has to protect application servers from new ransomware without inadvertently impacting the application services. Or a cloud architect working for a hot digital consumer company needs to quickly deploy and tune new services as their growth continues to accelerate.

By making applications and data the network's priority, we enable our users to build agile networks, leverage CI/CD and DevOps approaches, and lead the digital transformation that they're all driving.

# The Right Architecture for Client-to-Cloud Experiences



## There are four fundamental pillars that are key to Juniper's experience-first enterprise platform:

### 1 Assured end user experiences.

While other solutions provide visibility to the site or application, Juniper provides visibility all the way down to the individual client, application, and session to optimize individual user experiences. In addition, only Juniper has a common schema for applying customizable service levels from client-to-cloud (i.e. across the LAN/WLAN/WAN) as well as closed loop assurance in the data center and WAN.

Juniper lets you set and measure key metrics and proactively assure optimal user experiences on an ongoing basis.

### 2 Proactive automation.

Automation is key to lowering ongoing operational costs and maximizing IT efficiencies. Juniper leads the industry in open programmability and defined intent-based networking to provide control, observability and root cause identification. And we don't stop there. We are a leader in AIOps, which extends AI-driven insight for real-time actions, such as Self-Driving Network™ operations.

In addition, AI is used for network support, enabling problems to be addressed proactively and with minimal disruption to IT personnel.

### 3 Cloud-now and cloud-ready.

Juniper is leading networking in the cloud era — from cloud-native workloads and managing devices across multiple cloud instances, to cloud-hosted operations for troubleshooting, feature delivery, trending analysis, reporting, and more.

### 4 Connected security with real-time threat awareness.

By making the network threat-aware, our customers are able to detect and stop advanced threats in a much shorter timeframe, which keep their network pipes free and clear for business-critical traffic. Once a threat is detected, intelligence and protections are distributed to other enforcement points across their network, whether it's a router, a switch, a Wi-Fi access point, or a firewall.

This is where Juniper stands out, with our unique connected security approach delivering proven protection where it is needed most (e.g. 100% effectiveness score with zero false positives on the latest ICSA certification test), consistent security policies that can be created once and easily applied to any application traffic flow in both public and private cloud environments, and sophisticated policy and segmentation based on current risk profiles.





**None of this can happen in a vacuum. For automation, insight, and AI-driven actions to deliver maximum results from the client all the way through the cloud (or several clouds), they must be coordinated. More specifically, correlation is required across the WLAN, LAN, WAN, Data Center, and security domains to deliver cohesive operations and experiences.**

Let us put this into perspective with an example we all can relate to.

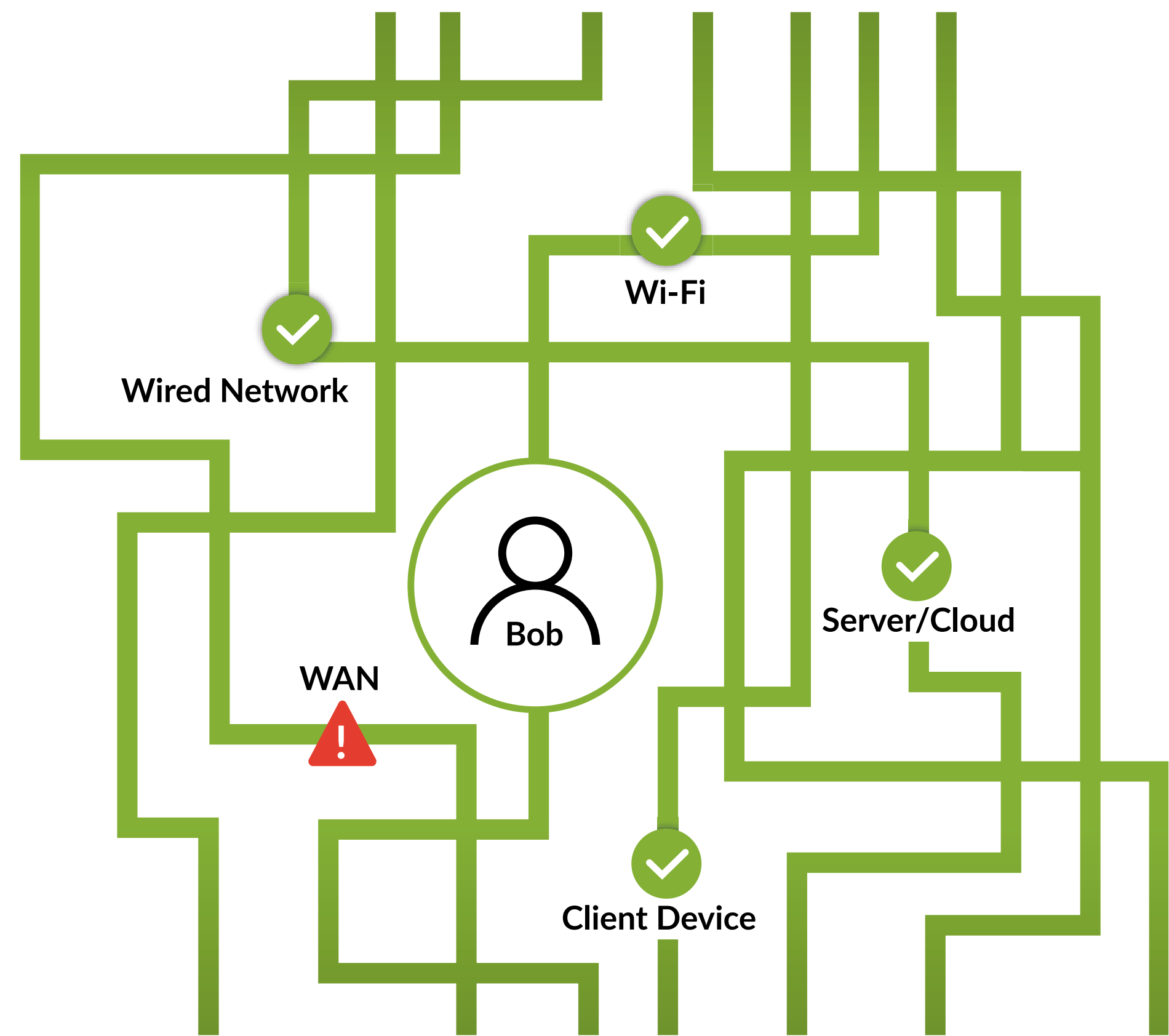
Yesterday, Bob's video call dropped. Why? Was it his Wi-Fi? A bad ethernet cable on his router? The application server in the cloud/data center? A new security policy? Malware on his computer? Or his internet/WAN connection?

With end-to-end service levels, event correlation, anomaly detection, and self-driving functionality, you can easily discover the issue and fix it before Bob even knows there is a problem. Juniper picks up where other solutions stop. We know that even though the network is up, Bob's experience is not good. And we know these things proactively, often before a user complains or a ticket is opened.

**That's experience-first networking.**



What was wrong with Bob's video call yesterday?





## Streamline Operator Experiences

The delivery of experience extends beyond what is going on for the user. This assured user experience depends on the experience and means of the operations team. Better automation, insights and AI in operational toolsets helps them to more quickly and efficiently deliver new apps and services, assure the user experience and security, and make repairs and changes when needed.

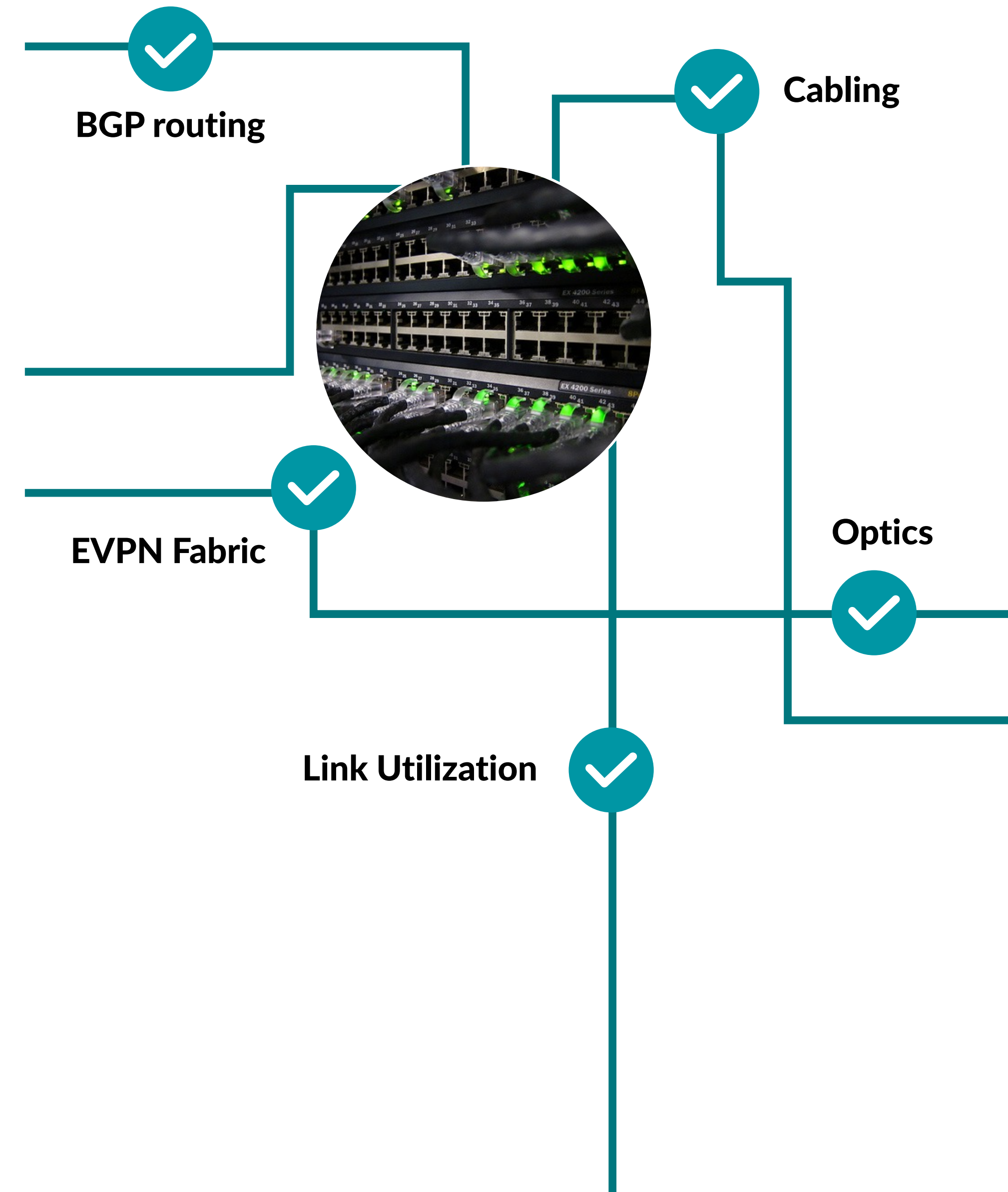
**Here's an example from the operator's point of view.**

It's a refrain we've heard before — the application isn't functioning correctly, so it *\*must\** be the network. The ability to quickly diagnose where the problem lies is key to getting the network fixed, or as is often the case, shortening the mean time to innocence.

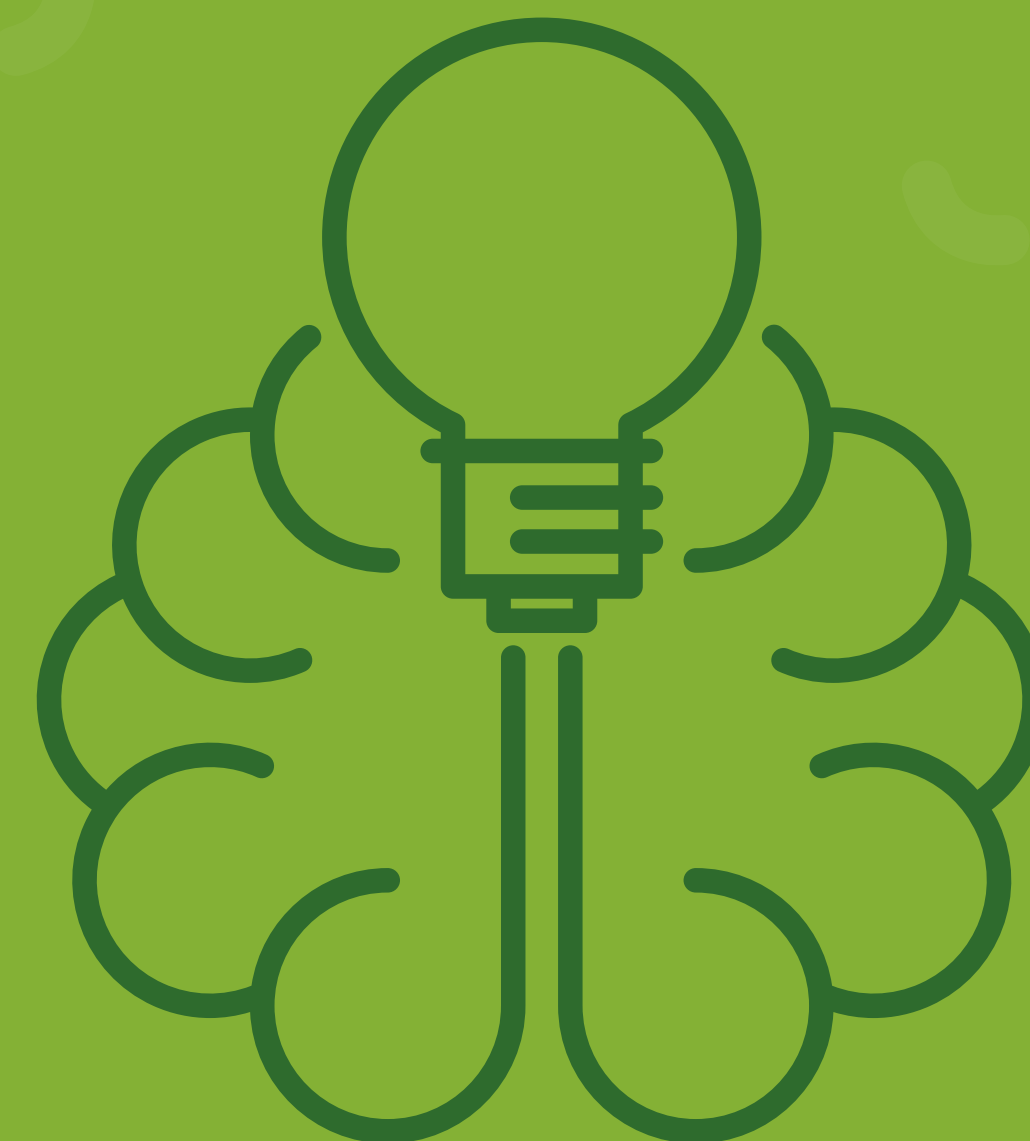
Could the issue be caused by an external routing issue? Something internal to the network fabric? Security policy? Bandwidth or cabling? It can be a major headache to sort through all the possible areas of failure to find the root of the problem. AI in operational toolsets paired with years of network service expertise when you need it enables you to fix your network quickly.

Having a single source of truth for your network allows network operators to specify exactly how they expect their network to operate and ensure that the network's function is continuously validated against that intent — if there is deviation, the system generates an anomaly. Further, the approach enables observability across teams, proactive discovery of potential issues and eases change management.

**That's putting experience for the operations team first.**

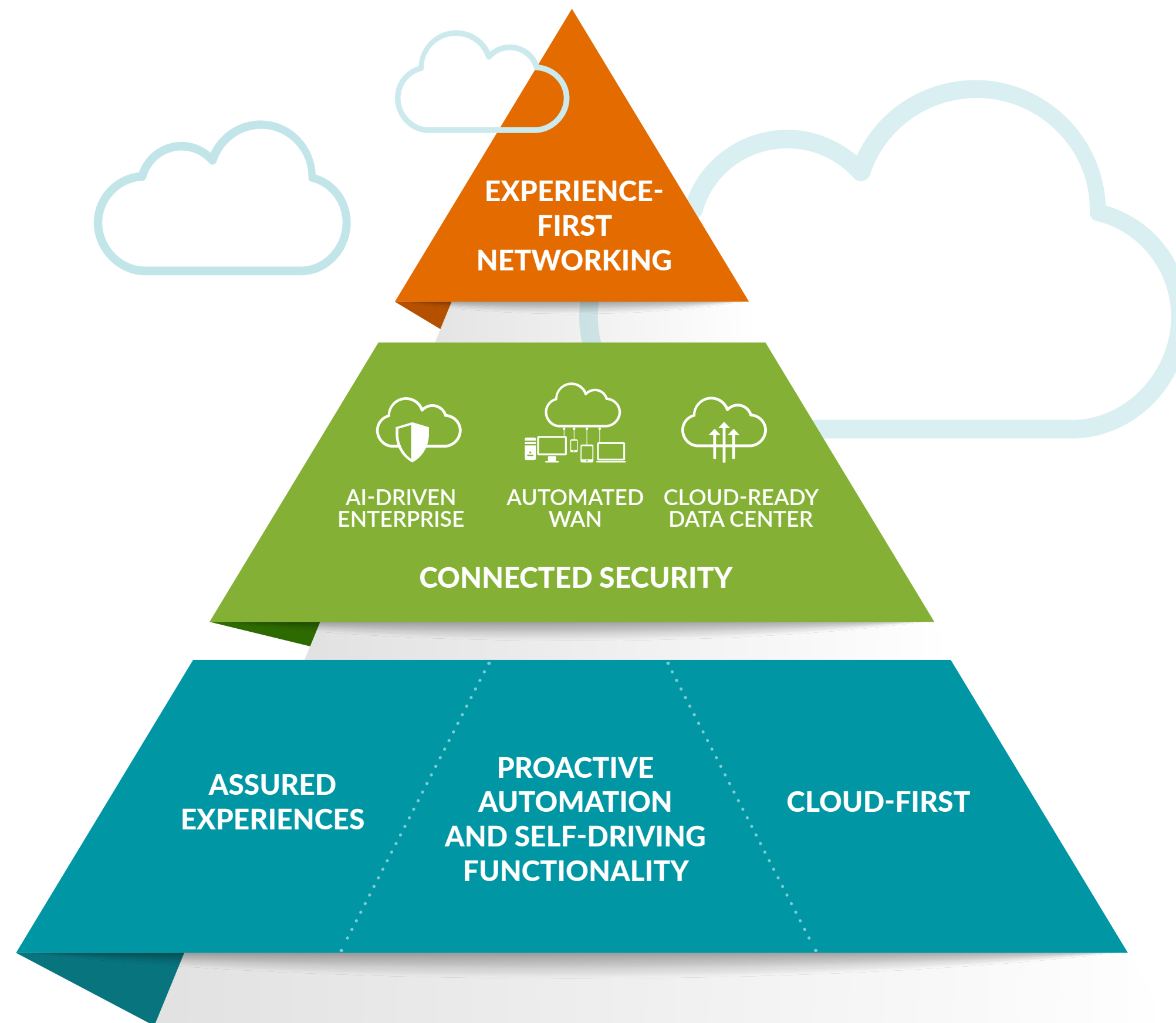


# The Juniper Enterprise Portfolio: When Experience Matters





**Juniper provides a complete client-to-cloud enterprise solution that encompasses three components to deliver the best IT and user experiences.**



The Juniper experience-first solution has the following networking components, each equipped with security built in to make them threat-aware:

### **AI-Driven Enterprise**

which includes wired and wireless access and SD-WAN 3.0, all driven by Mist AI.

### **Automated WAN Solutions**

for linking different offices and data center facilities with reliable connectivity.

### **Cloud-Ready Data Center**

for simplified underlay/overlay management with intent-based automation and assurance.

## AI-Driven Enterprise: Wired/Wireless Access.

Wireless is more business critical than ever, but traditional WLAN solutions are over a decade old and lack the agility and elasticity to support the rapid growth in mobile devices, IoT, and applications.

**Juniper changed the WLAN game with a revolutionary modern cloud-native platform that leverages Mist AI to:**



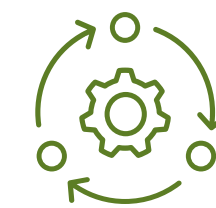
### Lower IT costs

with AIOps, self-driving network functions and Marvis — our conversational Virtual Network Assistant.™



### Assure better user experiences

with full-stack service levels, proactive remediation, personalized location services, and security.



### Bring agility to the network

through a microservices architecture that enables weekly updates to adapt to new devices and applications being deployed in our customers' networks.

By leveraging the years of learning that Marvis has performed in the wireless domain, Juniper has brought unprecedented insight and automation to wired access & the WAN edge by bringing all these attributes to the EX switching, Session Smart Routers, & SRX gateway platforms.

## Key differentiators of the Juniper solution for wired and wireless access driven by Mist AI:

**Dynamic packet capture (without human interaction)** for easy and accurate data collection without truck rolls.

**Automated event correlation** across the wired, wireless, WAN, and security domains for fast root cause identification and remediation.

**Programmable workflows** for 100% API-driven network operations.

**Virtual Bluetooth LE and integrated IoT** which bring the benefits of indoor location without extra hardware (e.g. no battery beacons) and software.

### Risk profiling for wired/wireless.

Juniper wired/wireless customers can receive alerts threats detected by Juniper SRX Series Firewalls and ATP Cloud. This allows administrators to quickly assess security risks when users and devices connect to access networks, and take appropriate action if required, such as quarantining or enforcing policies.

## 2022 Gartner Magic Quadrant for Wired & Wireless LAN Access Infrastructure.

Juniper has the furthest position of any vendor in both Ability to Execute & Completeness of Vision.

Figure 1: Magic Quadrant for Enterprise Wired and Wireless LAN Infrastructure



Gartner Magic Quadrant for Enterprise Wired and Wireless LAN Infrastructure, Mike Toussaint, Christian Canales, Tim Zimmerman, December 21, 2022.

This graphic was published by Gartner, Inc. as part of a larger research document and should be evaluated in the context of the entire document. The Gartner document is available upon request from Juniper Networks.

Gartner does not endorse any vendor, product or service depicted in its research publications, and does not advise technology users to select only those vendors with the highest ratings or other designation. Gartner research publications consist of the opinions of Gartner's research organization and should not be construed as statements of fact. Gartner disclaims all warranties, expressed or implied, with respect to this research, including any warranties of merchantability or fitness for a particular purpose.

Gartner® and Magic Quadrant™ are trademarks and service marks of Gartner, Inc. and/or its affiliates. All rights reserved. Gartner does not endorse any vendor, product or service depicted in this content nor makes any warranties, expressed or implied, with respect to this content, about its accuracy or completeness, including any warranties of merchantability or fitness for a particular purpose.



## Key differentiators of the Juniper solution for indoor location services.

We believe that our focus on customer experience has led to Juniper's placement in this year's Magic Quadrant. We offer:

- Highly accurate location service using patented virtual BLE technology
- Simplified deployment and operations enabled by Mist AI and 100% API-based platform
- Comprehensive analytics platform
- Rich portfolio of partner solution integrations
- Very positive customer feedback on experience with Juniper

## 2022 Gartner® Magic Quadrant™ for Indoor Location Services

Gartner has positioned Juniper as a Leader and furthest in Completeness of Vision.

Figure 2: Magic Quadrant™ for Indoor Location Services

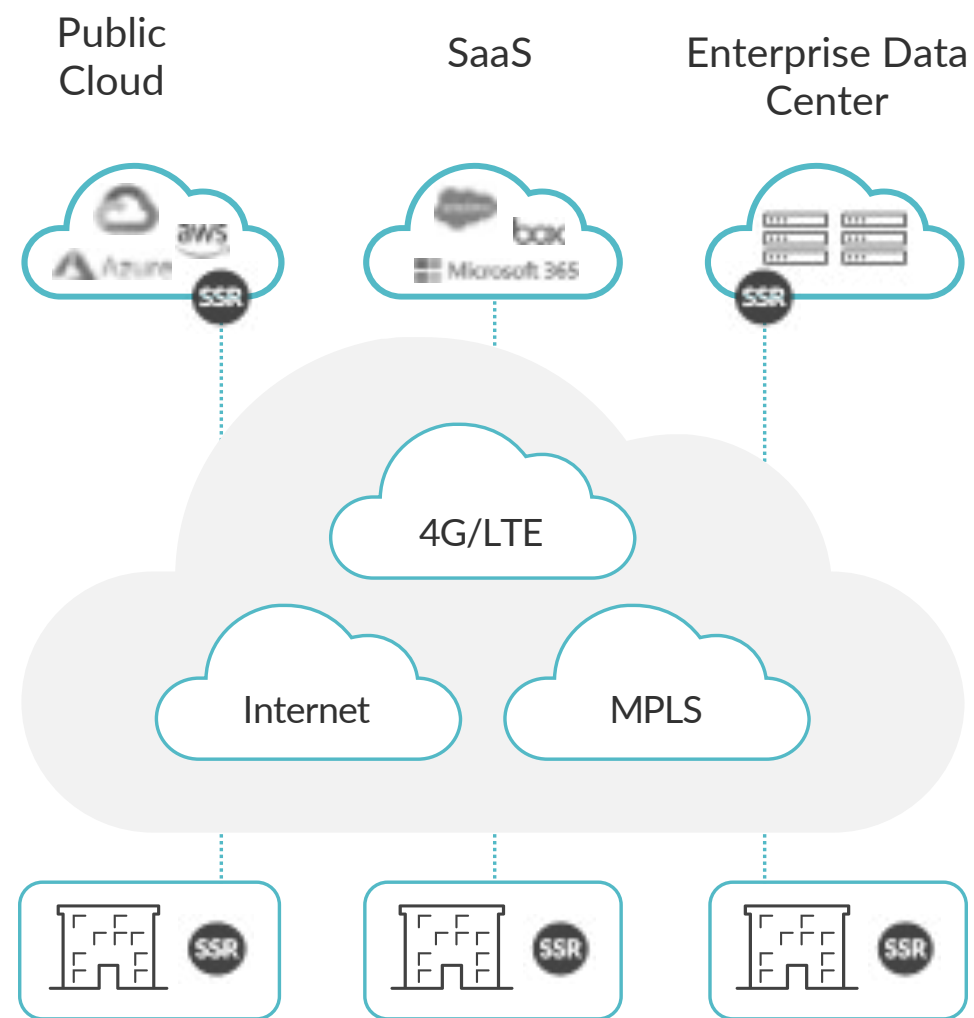


Gartner Magic Quadrant for Indoor Location Services, Tim Zimmerman, Annette Zimmermann 23 February 2022.

This graphic was published by Gartner, Inc. as part of a larger research document and should be evaluated in the context of the entire document. The Gartner document is available upon request from Juniper Networks.

Gartner does not endorse any vendor, product or service depicted in its research publications, and does not advise technology users to select only those vendors with the highest ratings or other designation. Gartner research publications consist of the opinions of Gartner's research organization and should not be construed as statements of fact. Gartner disclaims all warranties, expressed or implied, with respect to this research, including any warranties of merchantability or fitness for a particular purpose.

Gartner® and Magic Quadrant™ are trademarks and service marks of Gartner, Inc. and/or its affiliates. All rights reserved. Gartner does not endorse any vendor, product or service depicted in this content nor makes any warranties, expressed or implied, with respect to this content, about its accuracy or completeness, including any warranties of merchantability or fitness for a particular purpose.



- ✓ Optimized User Experience
- ✓ Application Awareness and Control
- ✓ Zero Trust Networking



Session Aware



Tunnel Free



Experience-First



Client-to-Cloud

## AI-Driven Enterprise: Session Smart™ SD-WAN.

By adding Mist AI to the leading WAN edge portfolio, Juniper charted a bold course for WAN transformation.

The static and network-centric approach to wide area networking is being replaced by a proactive AI-driven model with a keen focus on optimizing user experiences.

Session Smart is the third generation of SD-WAN (SD-WAN 3.0), delivering unique and groundbreaking technology that materially reduces WAN overhead, minimizes network latency, and replaces outdated and cumbersome network policies with flexible and real-time actions that are tied to real business and user needs.

## Key differentiators of the Juniper Session Smart™ SD-WAN solution:

### **Session awareness.**

Unlike legacy competitive SD-WAN solutions, intelligent decisions are based on real-time sessions and agile business policies instead of static network policies determined on a per tunnel basis. Policies can be defined by the user or users without complicated routing instructions, and will follow individuals wherever they roam.

### **No overhead (bandwidth savings).**

Because Session Smart SD-WAN is deployed without tunnels, approximately 30% of WAN overhead is reduced automatically, which substantially lowers bandwidth utilization expenses and minimizes cloud hosting costs. In some instances, Session Smart SD-WAN is 75% more cost effective than traditional SD-WAN solutions.

### **Call on the experts for the best experience.**

Implementing Session Smart SD-WAN can be game changing. To ensure a smooth transition engage Juniper's Session Smart SD-WAN deployment experts to deploy best-practice implementation methods, tools and experience.

### **Experience-first.**

Session Smart networking delivers superior performance for real-time traffic like voice over IP, 5G, and collaboration applications. For business critical collaboration applications, Zoom and Teams, session failover ensures that calls will stay active, even in the event of a link failure, by leveraging the backup link. This sets the Session Smart solution apart from the competition which requires 2-3 minutes to re-establish a tunnel, meaning that the call will be lost during the re-establishment time.

### **Zero trust and enhanced security.**

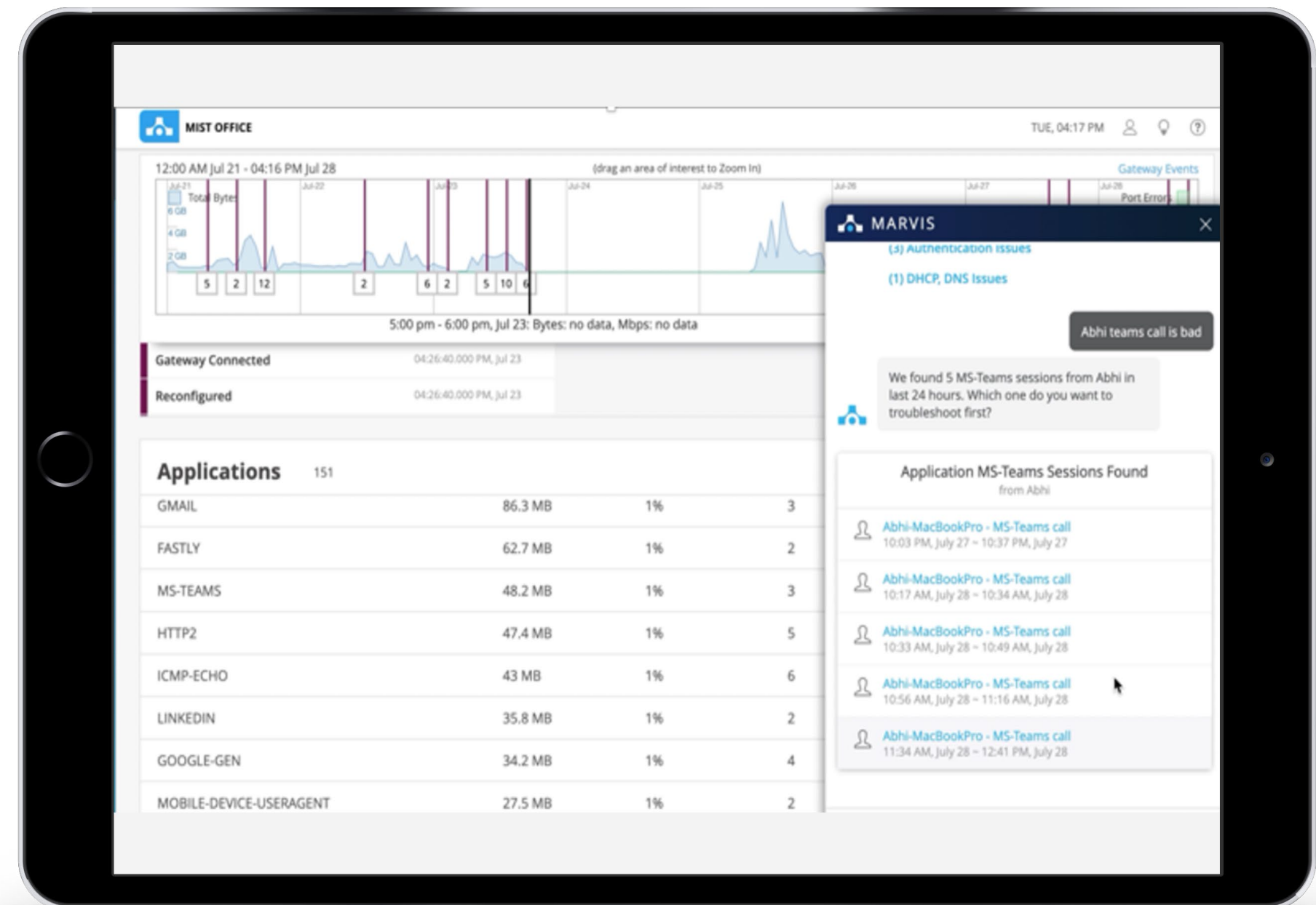
Session Smart SD-WAN is zero trust by default, delivering session integrity and segmentation "out of the box". When the Session Smart SD-WAN solution is deployed in conjunction with SRX Series firewalls, customers get Zero Trust Security, including dynamic threat detection, Encrypted Threat Analysis, and threat protection validated by ICSA Labs and CyberRatings.org to be 99.7% effective against advanced threats.





## AI-Driven Enterprise: Driven by Mist AI.

Juniper's wired, wireless, and SD-WAN solutions are all driven by Mist AI. As a result, they all leverage best-in-class AIOps for **client-to-cloud automation, insight, and assured actions that deliver the following unique attributes:**



- **Set, monitor, and enforce service levels** across the LAN/WLAN/WAN for optimal user experiences (by device, user, group, and location).
- **Proactive automation** through prescriptive recommendations, with closed-loop verification when actions are taken.
- **Anomaly detection** to quickly identify and fix new issues (before users know they exist).
- **AI-driven actions** through Self-Driving Network™ remediation, when possible, to fix problems proactively and avoid common issues associated with human error.
- The only **AI-driven Virtual Network Assistant™ (Marvis)**, which uses natural language processing (NLP), natural language understanding (NLU), and a conversational interface for unsurpassed insight and automated help desk functions.
- **Deploy with an AI-driven Enterprise expert** to accelerate and guide planning, migration, training, and provisioning specific to your network.





## Automated WAN.

For many large organizations, their WAN is essential for linking their offices and data center facilities with reliable connectivity, and for employees to use mission-critical applications.

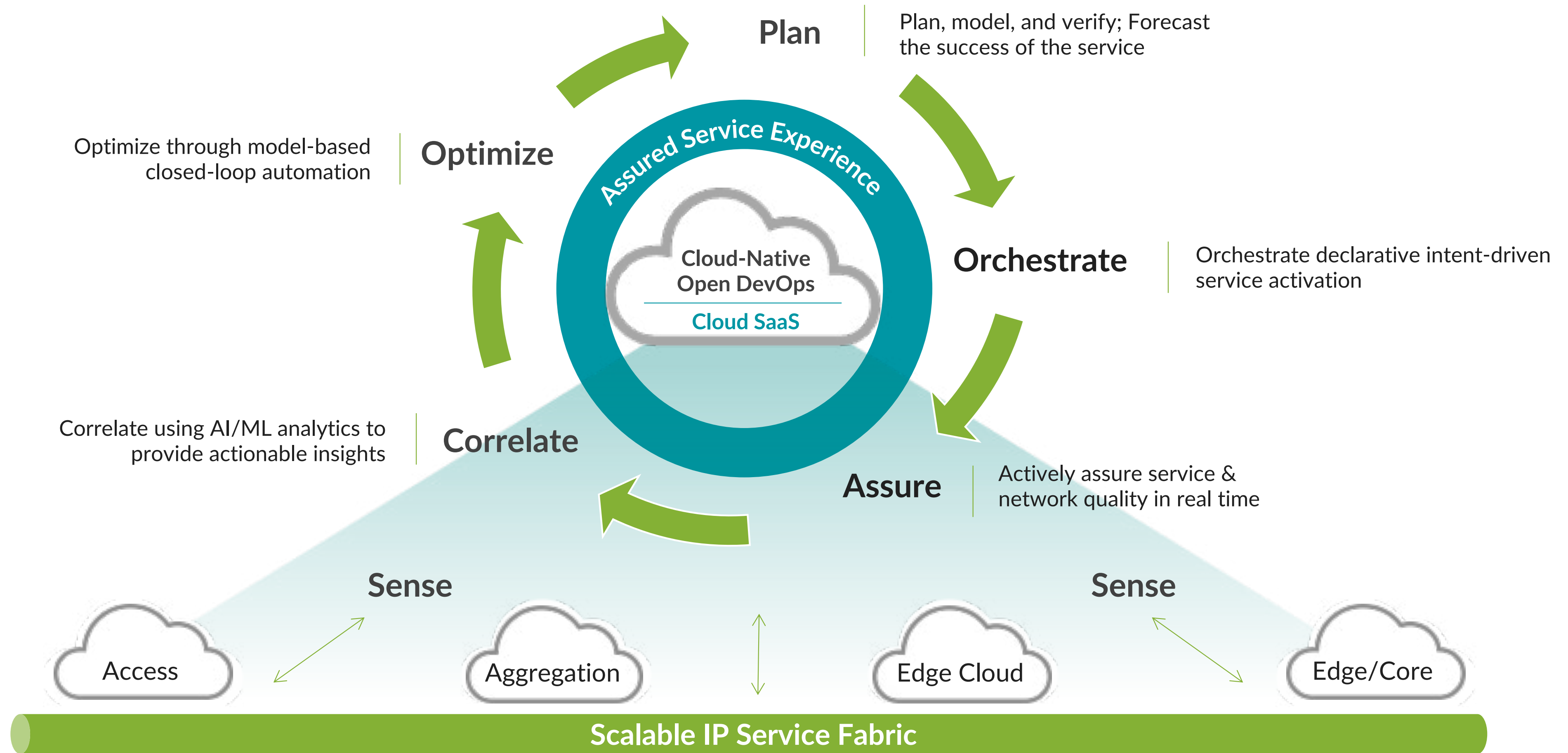
The enterprise WAN is critical in delivering the uptime, resiliency and agility required to ensure the organization can scale and adapt technology operations as its business changes and manage security risk.

**Automation lays the foundation for a self-healing network, ultimately resulting in a superior user experience.**

### Key differentiators of the Juniper solution for automated WAN:

-  **Agility for the unknown.**  
With the inherent programmability of the trio chipset, Juniper's automated WAN solution is like a Swiss Army Knife, giving you virtually endless use case versatility and flexible bandwidth on-demand.
-  **Intent-driven automation.**  
Juniper Paragon Automation delivers closed-loop automation that translates business intent into service performance, assuring your customers receive a differentiated experience throughout their time with you.
-  **Threat-aware by design.**  
Juniper MX series is the industry's first and only platform to deliver routing and advanced security services, all in one. DDoS protection, stateful firewall, CGNAT, URL filtering, and DNS sinkhole provide effective security without performance degradation.
-  **Experience-first deployment.**  
Juniper services custom built for Paragon deployment puts a seasoned expert on your team to assess, design, and test your automated WAN.

# Juniper Paragon Automation Powers the WAN.





## Cloud-Ready Data Center.

Modern data center networking solutions need to provide the agility and flexibility associated with cloud-like infrastructure and cloud operational models. It's not about building better networks, it's about making networking better. It's the shift from merely moving packets to making it easier to manage and operate. It's about driving end user experience and operator experience through automation and assurance. And it's bringing to life the big idea of simplicity across the entire data center infrastructure.

### Key differentiators of the Juniper solution for the automated data center:

#### A world class portfolio of data center switching.

Juniper's QFX and PTX Series continue to lead the industry with a switching portfolio that leverages both merchant and custom silicon delivering best-in-class throughput and scalability, including 400G interfaces, the open programmability of the Junos OS, and the widest range of EVPN-VXLAN and IP fabric capabilities.

#### One unified, multivendor solution for automation and assurance.

Juniper Apstra is the only closed-loop fabric management with a single source of truth extending from design (Day 0), through deployment (Day 1), to assured operations (Day 2+). Simply describe what is needed and the software sets up the network accordingly and assures continuous operation as intended, with built-in change control and proactive notifications of network issues.

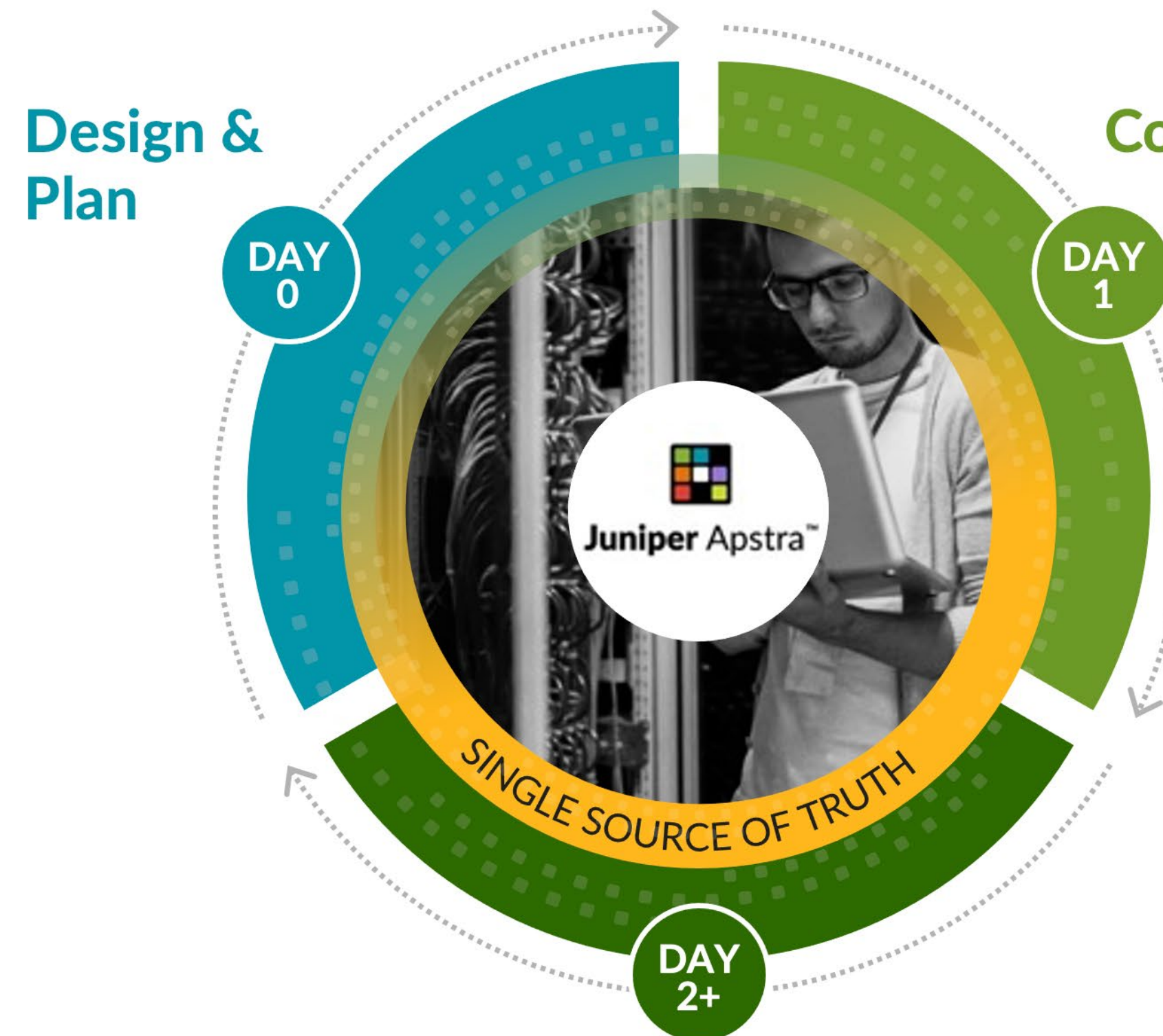
#### A best-in-class open-source SDN overlay.

Contrail Networking, for common control over networking and security across private and public clouds for Kubernetes, bare metal and virtual machine workloads, extending network automation into DevOps workflows.

#### Zero trust data center.

Juniper provides segmentation, user and application-based traffic policies, and threat prevention services to enable a zero trust data center. Juniper SRX firewalls prevent unauthorized users and malware from accessing the data center at the edge, security subscriptions on vSRXs within the data center protect traffic inside using identity-based policies, and the cSRX provides containerized security that is used to protect individual applications and workloads.

## Reimagining Data Center Operations: One Unified Solution.



- ✓ Intent-based simplicity
- ✓ Reliability ►► Speed
- ✓ Only multi-vendor solution
- ✓ 320% ROI

## Juniper Services Put Your Experience First.

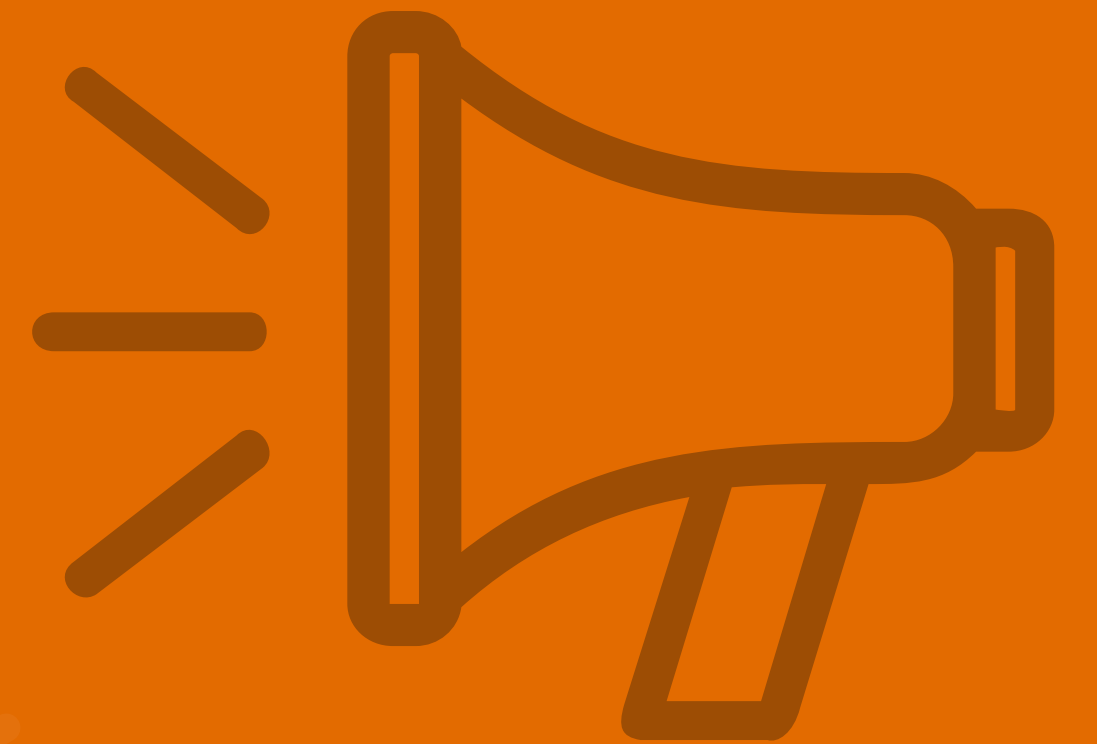
Juniper is committed to enabling innovation, automation, and data-driven insights as we align technology and AI across our comprehensive suite of network lifecycle services. With a customer-first focus, we'll help you achieve success with your network strategy and reach your business goals.

- **Advisory Services.**  
Strategically plan for network modernization success while reducing risk.
- **Deployment Services.**  
Simplify how you build and deploy networks so you can realize value faster.
- **Migration Services.**  
Transition with confidence to new networking technologies.
- **Optimization Services.**  
Rapidly validate new network capabilities and accelerate deployment.
- **Support Services.**  
Efficiently manage your network and reduce operating expenses.
- **Education Services.**  
Get the skills you need to get certified or excel with Juniper solutions.













# Real Results Real Experiences



## Real Results. Real Experiences.

Optimizing IT experiences saves time and money, while enabling IT departments to best align with key business objectives. For example, the following enterprise customers have all benefited from Juniper's experience first approach:

-  ServiceNow maximized employee productivity by **eliminating over 90% of all user-generated Wi-Fi trouble tickets.**
-  A major telco deployed Juniper across 2,400 retail locations to ensure customers could quickly and reliably transfer data between phones when making a new purchase. This was critical to **ensuring customer satisfaction in a highly competitive retail environment.**
-  For a web services company, automation in the data center led to game changing agility — tasks taking two weeks in the past now only take two hours — **a 99% improvement.**
-  The Orlando VA Medical Center combined Wi-Fi, virtual Bluetooth LE and IoT to **track assets, provide a better network experience for the Veteran and prevent dementia patients from leaving facilities unattended.**
-  The City of Philadelphia implemented a threat-aware Juniper network to reduce risk, and empower both city workers and visitors with **superior smart city services.**
-  Students at Dartmouth are getting **reliable wired/wireless connectivity everywhere on campus.**
-  Fans all over the US can stream Pac-12 Networks soccer matches, football games, track meets, and more, with **high-quality video and no glitches.**
-  A national healthcare system is saving **30% of OpEx** by switching from MPLS to a centrally managed Juniper SD-WAN.

Juniper simplifies operations and puts a spotlight on users for the best end-to-end experiences — from client-to-cloud. That level of automation, insight and self-driving actions simply didn't exist before, and can only be achieved with Juniper.

# A new era of Experience-First Networking is upon us, led by Juniper.

## Is your network ready?



Driven by Experience™

### Corporate and Sales Headquarters

Juniper Networks, Inc.  
1133 Innovation Way  
Sunnyvale, CA 94089 USA  
Phone: 888.JUNIPER (888.586.4737)  
or +1.408.745.2000  
Fax: +1.408.745.2100  
[www.juniper.net](http://www.juniper.net)

### APAC and EMEA Headquarters

Juniper Networks International B.V.  
Boeing Avenue 240  
1119 PZ Schiphol-Rijk  
Amsterdam, The Netherlands  
Phone: +31.0.207.125.700  
Fax: +31.0.207.125.701

PN: 7400137-002-EN

Copyright 2023 Juniper Networks, Inc. All rights reserved. Juniper Networks, the Juniper Networks logo, Juniper, and Junos are registered trademarks of Juniper Networks, Inc. in the United States and other countries. All other trademarks, service marks, registered marks, or registered service marks are the property of their respective owners. Juniper Networks assumes no responsibility for any inaccuracies in this document. Juniper Networks reserves the right to change, modify, transfer, or otherwise revise this publication without notice.

